



Home / [Get Inspired](#) / [Spaces](#)

This Minimalist Annex Victorian Reframes What a Home Needs



[f](#) Share [t](#) Tweet [p](#) Pin [e](#) Email [p](#) Print

Faced with a narrow floor plate, StudioAC was forced to re-think what their clients wanted

By [Gregory Furgala](#)
Photography by [Jeremie Warshafsky](#)

The team at **StudioAC** knew they wouldn't include a kitchen island in the reno of this Annex-area Victorian. It was one of the few things the client, a newly married couple with a child on the way, had specifically requested, imagining themselves gathering around it with friends and family. While technically feasible, at just over four metres wide the home was just too narrow to reasonably accommodate it.





Cabinetry by Woodstudio is topped with **Caesarstone** and clad in white oak veneer, matching the flooring and wainscoting found throughout the rest of the home. Flooring by **Fuzion Flooring**; fireplace by **Regency**; integrated appliances by **Fisher & Paykel**.

Instead, the team forgot about specifics and focused on the desired experience. Their client didn't want an island, they reasoned; they wanted a place to gather. In their early, island-less renderings, they had already included a dining table, and then it hit them: the client already had what they wanted. "That really is the sentiment: moving away from objects and toward experiences," says StudioAC co-founder Jennifer Kudrats, who spoke to DL about the project. "So how can a physical space help foster that?"



Like the first storey, the main bed and bath feature an open-concept layout, with white oak millwork loosely delineating zones while directing the eye toward the stunning main bath.

The rest of the home, built out by Stein + Regency and **Woodstudio**, answers Kudrats' question (and, of course, accommodates its narrow floorplate). Taking a minimalist tack, the first storey was stripped of partitions, which invited natural light in – despite being narrow, it stands nearly 16 metres long – while leaving it open and flexible. Counter-height millwork runs the length of one wall, from the living "room" through to the kitchen, housing a fireplace, television and a suite of fully integrated appliances. The gesture maximizes functionality while reducing clutter, leaving the open-concept

space ready for anything (which these days, is a recently mobile toddler who has taken to running through it at full tilt).



Situated on the third floor at the front of the home, the main bath's floor, walls and tub surround are clad in stone-look porcelain tile from [Stone Tile](#). Bath by Victoria & Albert. See our full look at the space [here](#).

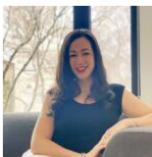
What the home lacked in width, it made up in soaring ceiling height. Taking advantage of the abundance, unadorned white oak wainscoting was installed, maintaining the home's pared-down palette throughout. StudioAC carried the look up through to the third storey, which is given over to the main bed and bath (and which [we covered previously](#)). The effect, Kudlats says, is not unlike a cozy, welcoming hug, and what more does one want from home than that? [ARCHCOLLAB.COM](#)

Last edited: April 23, 2021

Categories: [Spaces](#)

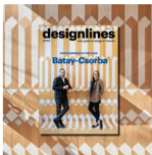
Tags: [Caesarstone](#), [Fuzion Flooring](#), [Regency](#), [Stone Tile](#), [StudioAC](#)

You may also like



Architect Brenda Izen's Completely Renovated Postwar Bungalow

Brenda Izen, principal of her eponymous architecture firm, got into the profession earlier than most. As a child, she regularly visited job sites with her grandfather, an architect, who taught her how to read drawings and visualize the shape and ... [Continued](#)



Out Now: What's Inside Our Designer of the Year Issue

It's difficult to pin down exactly what makes a Batay-Csorba Architects project. A Flemish-bond brick facade, offset dormer and vaulted carport mark out a home of theirs in High Park. In Parkdale, a duplex featuring a pair of intricate brick ... [Continued](#)



Houman Rahimzadeh's Collectable-Filled New Build



We've been covering Studio Munge for several years now, so we're particularly happy that we get to look into the home of their new senior team lead, Houman Rahimzadeh – not that he's new to the design game. Rahimzadeh counts ... [Continued](#)



How an Old Coach House Became a Modern Laneway Home

When creative director Stéphane Monnet crowded himself out of his Argyle Street house – renting out the top floor to a tenant, turning the ground floor into an office – he was not the victim of his own bad planning. ... [Continued](#)

[See More Posts](#)

Related



[Get Inspired / Spaces](#)

7 Swoon-Worthy Condo Kitchens to Inspire Your Own



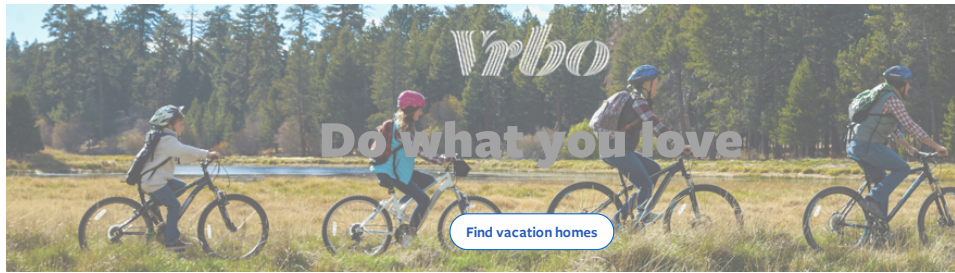
[Get Inspired / Spaces](#)

PLANT Architect Returns to this Riverdale Home With Plenty of Millwork



[Get Inspired / Spaces](#)

7 Landscaping Ideas That Have Us Eager for Summer



Got something that's suitable for Designlines?

[Submit your listing](#)

Sections

[What to Buy](#)
[Where to Shop](#)
[Who to Hire](#)
[Get Inspired](#)
[Sales and Events](#)
[The Magazine](#)
[Subscribe](#)

[Advertise](#)
[Newsletter](#)
[Contact Designlines](#)

Follow Us

[Facebook](#)
[Instagram](#)
[Pinterest](#)
[Twitter](#)
[LinkedIn](#)

[See Also](#)
[Shop Designlines](#)
[Azure Magazine](#)
[AZ Awards](#)

Contact Us

213 Sterling Rd.
 Suite 206
 Toronto, Ontario
 M6R 2B2 Canada

T 416 203 9674
 F 416 203 9852

info@designlinesmagazine.com

Copyright 2021 Designlines Magazine
[Privacy Policy](#) | [Terms of Use](#)